

Pedigree Tool

Documented by:	
Date:	
Historian:	

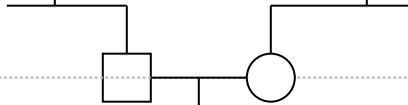
Key:

Paternal ethnic background:	Maternal ethnic background:
-----------------------------	-----------------------------

Generation 3



Generation 2

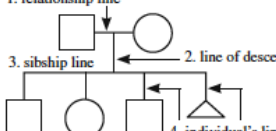


Generation 1



Pedigree Tool

1. Definitions


1. relationship line

 2. line of descent
 3. sibship line
 4. individual's line


Comments

If possible, male partner should be to left of female partner on relationship line.

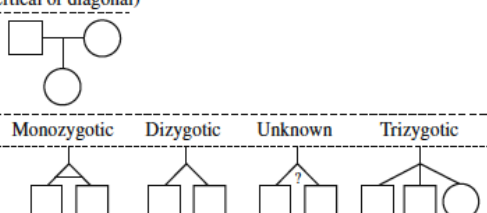
Siblings should be listed from left to right in birth order (oldest to youngest).

2. Relationship line (horizontal)

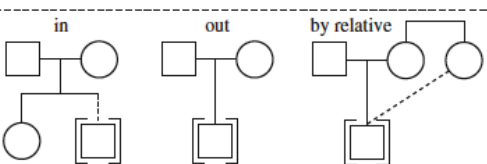
a. Relationships

 A break in a relationship line indicates the relationship no longer exists. Multiple previous partners do not need to be shown if they do not affect genetic assessment.

b. Consanguinity

 If degree of relationship not obvious from pedigree, it should be stated (e.g., third cousins) above relationship line.

3. Line of descent (vertical or diagonal)

a. Genetic


- Multiple gestation: Monozygotic, Dizygotic, Unknown, Trizygotic
- Family history not available/known for individual: ?
- No children by choice or reason unknown: vascotomy or tubal
- Infertility: azoospermia or endometriosis

b. Adoption


- in
- out
- by relative

	Male	Female	Gender not specified
1. Individual (assign gender by phenotype)	b. 1925	30y	4 mo
2. Clinically affected individual (define shading in key/legend)			
3. Multiple individuals, number known			
4. Multiple individuals, number unknown or unstated			
5. Deceased individual	d. 35	d. 4 mo	d. 60's
6. Consultand			
7. Proband			
8. Stillbirth (SB)	SB 28 wk	SB 30 wk	SB 34 wk
9. Pregnancy (P)	LMP: 7/1/2007 47,XY,+21	20 wk 46,XX	
Pregnancies not carried to term		Affected	Unaffected
10. Spontaneous abortion (SAB)		17 wks female cystic hygroma	< 10 wks
11. Termination of pregnancy (TOP)		18 wks 47,XY,+18	
12. Ectopic pregnancy (ECT)			

Bennett, et al. (2008). Standardized Human Pedigree Nomenclature: Update and Assessment of the Recommendations of the National Society of Genetic Counselors. *Journal of Genetic Counseling*, 17(5): 424-433.